



<http://pro.jvc.com>

Network Camera for Versatile functions

NTSC

2009



		JVC VN-V685U	JVC VN-V686BU	JVC VN-V686WPBU
Image Device		1/4 CCD		
Minimum Illumination	Color	0.5 lx (25%)		
	B/W	0.04 lx (25%)		
Compression		JPEG / MPEG-4		
Max Frame Rate (at VGA Mode)	JPEG	30 fps		
	MPEG-4	30 fps		
Full Motion Dual Stream		Yes		
Optical Zoom ratio		27x	36x	
Pan Range		360°Endless		
Tilt Range		-5° to 185°		
Max Pan / Tilt Speed		400°/ 400°		
Pan / Tilt Accuracy		0.03°		
True Day & Night Function		Yes		
Wide Dynamic Range		Yes (Active Gamma)		
Image Stabilizer		Yes		
PoE (IEEE 802.3af) driven		Yes		
Hot Swapping		Yes		
Operating Temperature		14 to 122°F		-40 to 122°F
Other		* Direct Drive Motor	Direct Drive Motor	* IP66 Outdoor Type with built-in heater and wall mount bracket * Direct Drive Motor

Full frame 30 fps Dual Stream each!

Ultra accuracy

PoE !!

AXIS 233D	PELCO SPECTRA IV IP	Panasonic WV-NW964
1/4 CCD	1/4 CCD	1/4 CCD
0.5 lx	0.55 lx (35%)	0.5 lx (30%)
0.008 lx	0.00018 lx (35%) (x30 slow shutter)	0.004 lx (10%)
JPEG / MPEG-4	JPEG / MPEG-4	JPEG / MPEG-4
30 fps	30 fps	30 fps
30 fps	30 fps	30 fps
-	-	(5 fps each)
35x	35x	30x
360°Endless 0° to 180°	360°Endless 2° to 92°	360°Endless -5° to 185°
450° / 450°	400° / 200°	400° / 400°
	0.1°	
Yes	Yes	Yes
Yes	Yes	Yes
Yes	Yes	Yes
-	-	-
23 to 113°F	-50 to 122°F	-40 to 122°F
	*Environmental pendant	* IP66 Outdoor Type with built-in heater

* Competitors specifications obtained from their website and leaflet 4/25/2008.

PoE , proven Green Product



12.95W



Only JVC offers the professional endless PTZ mechanism with normal PoE. (IEEE 802.3af)

JVC's engineering design team has realized the revolutionary Direct Drive motor which requires less power consumption and generates more torque.

Full motion Dual Stream

Simultaneous M-JPEG and MPEG-4 streams at 30fps in VGA

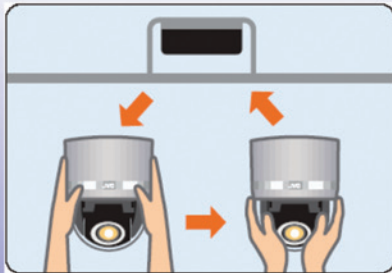
JVC



Non-JVC



Easy Maintenance and Replacement



JVC's Plug-and-Play concept can make your after-maintenance easier and speedier. You can replace just the camera part without removing the base unit fixed on the ceiling. **All settings including preset position remain unchanged in the base unit**, so you can minimize operation downtime.

Silent and Accurate PTZ for Reliable Monitoring



Super smooth low speed



No mechanical noise



Accurate



New DD motor

